

“ A complete cyber café management software solution ”



GETTING STARTED

Café Cop Setup & Installation Guide

Overview

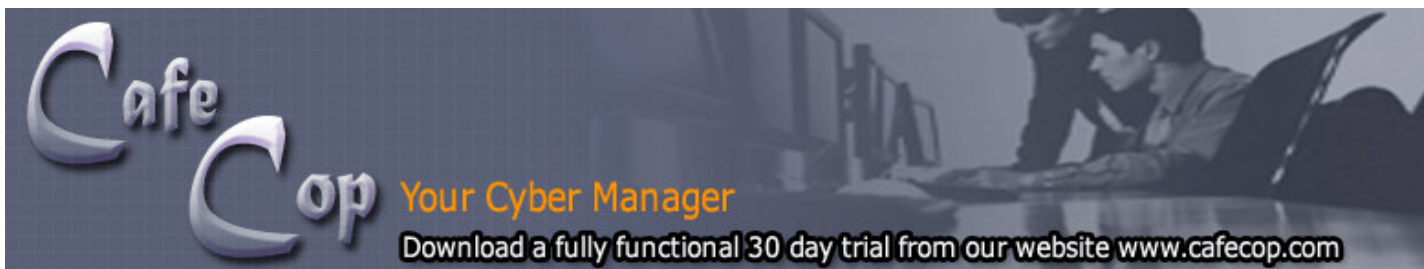
This document is created for the sole purpose of providing all the essential information regarding Café Cop Installation. For a detailed description about Café Cop features please visit the Café Cop website at <http://www.cafecop.com>

System Requirements

For Cafe Cop to get up and running you are not required to install or include any special hardware. Your present network setup under most circumstances will be just fine for Cafe Cop to get working. Cafe Cop utilizes minimum system resources to ensure that your computers are not burdened. Cafe Cop installation (both server and client) is a very simple process and you are not required to anything while installation.

Minimum System Requirements

- Windows 95/98/Me/NT/2000
- Your current working LAN with TCP/IP installed
- Intel Pentium 166 Mhz. or above with minimum 32 MB RAM (Recommended Pentium II Processor or above with 64 MB RAM). 20 MB Hard Disk Space
- Microsoft Data Access components 2.5 or higher (MDAC). This is only required for Café Cop Server if your operating system is Win 95 or 98. No such requirement on any other windows platform as MDAC comes preinstalled in the later versions.



Free Trial Version

The free trial version fully functional, and has a 30 day trial period, after which you will need to register and get a license key for Cafe Cop to continue.

You can download the free 30 days trial version from the following locations :

- **Single file in Zip Format**

http://download.nliventech.com/cc_demo.zip

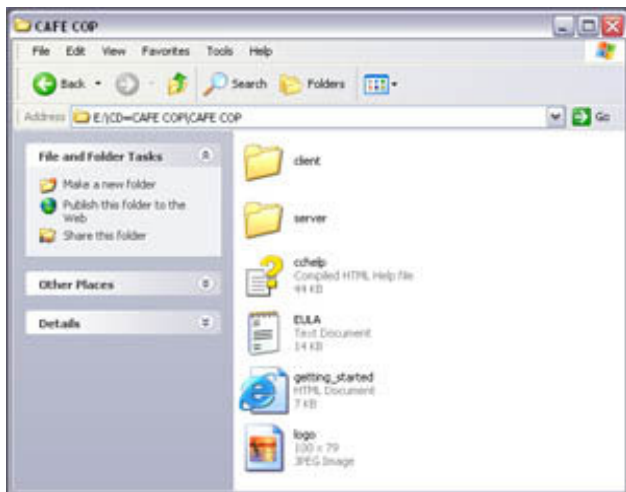
- **Individual Self Extracting Setup files**

- **Server** : http://download.nliventech.com/trial_server.exe
- **Client** : <http://download.nliventech.com/client.exe>

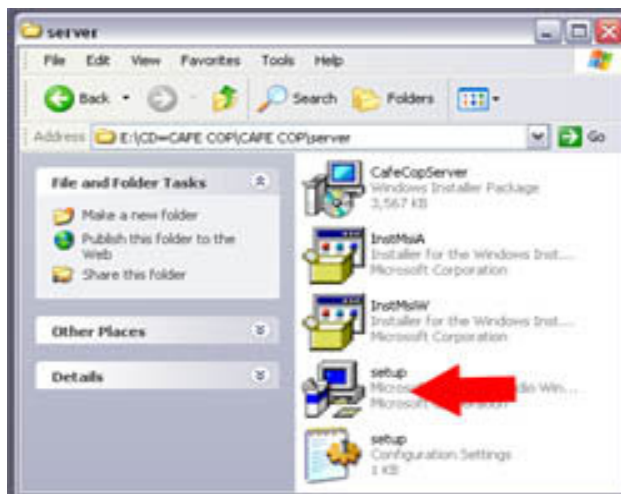
- MDAC can be downloaded from the Microsoft website:
http://download.microsoft.com/download/dasdk/install/2.50.4403.12/W9xNT4/EN-US/mdac_typ.exe

Server Installation

After unzipping cc_demo.zip file, open the unzipped folder. Open the server folder present in it.



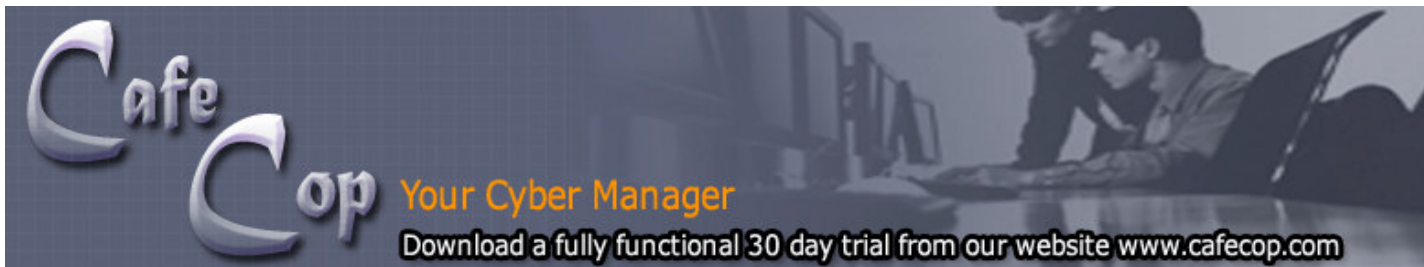
Unzipped cc_demo.zip folder



Server Installation Folder

Click on the setup.exe file to begin the installation. You will be required to press the next button to proceed with the installation. Press finish at the end to complete the installation. Depending upon your operating system you may be prompted for a restart. Win 95/98 may require a restart.

On Café Cop Server first run you will be required to fill a online registration form. Please fill in this registration form with proper information as we give away attractive offers and additional information to our registered users.



Registration Form

This registration process is extremely important for our full version users in order to receive your license key. Once everything is done press the submit button which will complete the registration. Please make sure that you are connected to internet while you are registering. After successful registration Café Cop Server will start minimized automatically. You can launch Cafe Cop server from its desktop icon, system tray icon or from the programs menu.

Start Menu>Programs>Cafe Cop>Server

Cafe Cop Server starts minimized and shows a login dialog on clicking its icon. Use the default administrator or manager account login and password to login into cafe cop server panel.
 Default Accounts
 Login : administrator
 Password : admin

Login Screen

Now since Cafe Cop Server is on, you can install and run Cafe Cop Client on all your computer.

Client Installation

Open the client folder present in the unzipped folder & click on setup.exe file to begin the client installation. Press next button to proceed with the installation, you can change the default location of the client installation if you wish. Press finish to complete the Client installation.

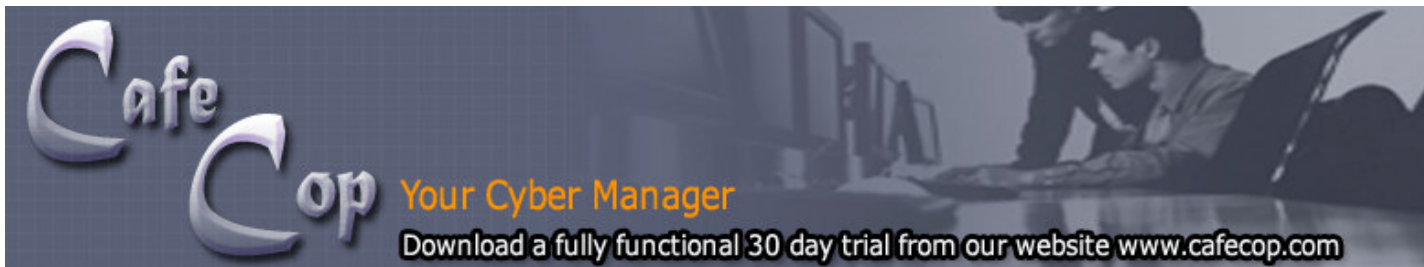
Click on the desktop icon to launch Cafe Cop client application. When client application starts for the first time, you will have to type the network name of Cafe Cop server system. Alternatively you can also type the IP address of the Café Cop Server Computer. Though using the network name would be a better option as you wont be required to update the clients in case your server IP is dynamic.



This network name can be seen from the network neighborhood icon. You can find the network name from the properties page of network neighborhood by right clicking on its desktop icon & selecting properties in win95/98. Open properties page of My Computer to find the network name in Win ME/XP/2000 by right clicking its desktop icon and selecting properties.

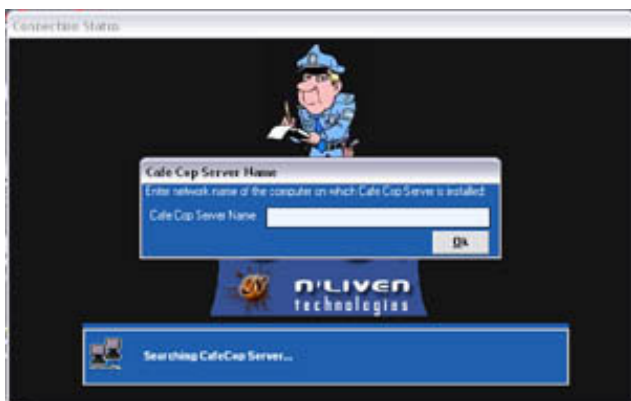
Win 95/98 :

1. Right click on network neighborhood icon.
2. Select properties from the menu.
3. Open the identification tab.
4. Computer name Box shows the network name of that computer.

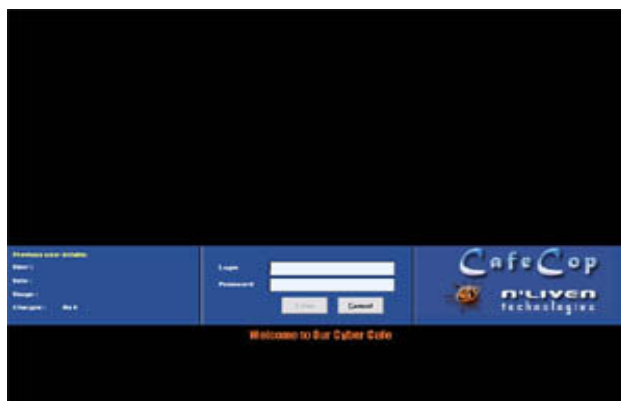


Win ME/XP/2000 :

1. Right click on My Computer desktop icon.
2. Select properties from the menu.
3. Open the Computer Name tab.
4. Computer Description Box shows the network name of that computer.



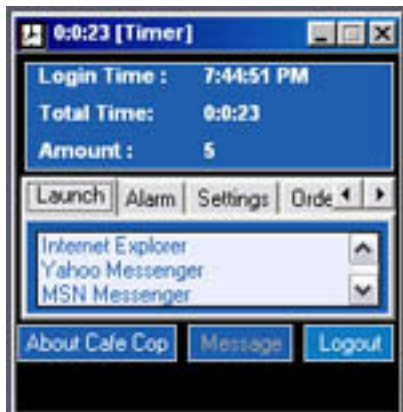
Client Connection Screen



Client Initial Screen

Once the server name is entered correctly Cafe Cop client will launch and you will face the initial Cafe Cop Login Screen.

Default Accounts



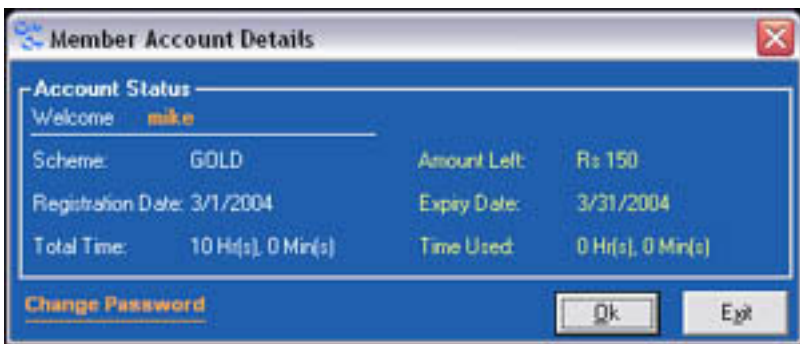
Client Timer

Post Paid User (Walk In Customer) Mode

Default Login : guest
 Password : gut

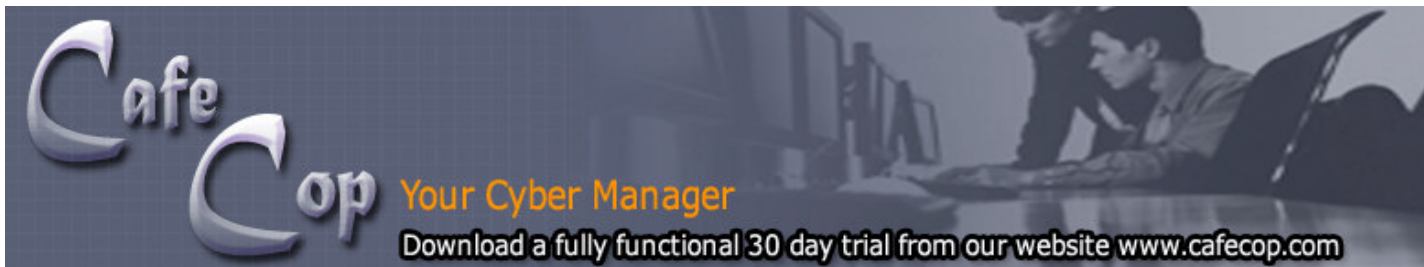
Pre Paid User (Members) Mode

You will need to create accounts for your post paid users from Café Cop Server first. Timer will start in the same manner will display membership details or account summary of the pre paid user first.



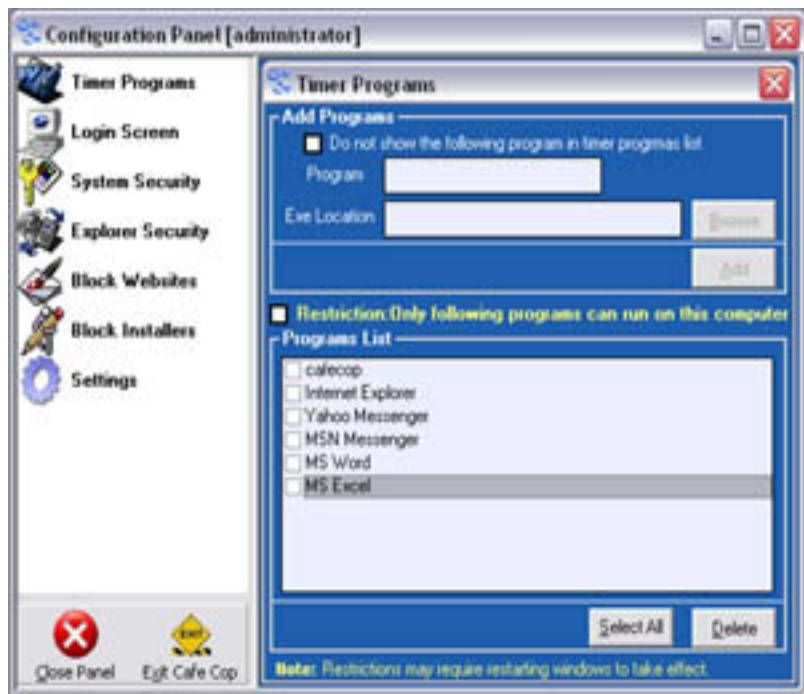
Pre Paid User (Member) Login

A pre paid user (member) gets the following account details panel first on login. On pressing ok, client timer starts & pre paid users account gets debited by the duration he uses the computer. Please note that all the pre paid users are logged out automatically out of the timer on completion of their account duration.



Administrator Mode

To configure various client features you need log into cafe cop client using administrator or manager account.



Client Configuration Panel

Client configuration panel offers the following features:

1. Ability to add/remove programs in Café Cop Timer & restrict them.
2. Customize client login screen text & insert your own images.
3. Customize various security settings to protect them from being accessed or changed by users.
4. Internet Explorer security options.
5. Website & Keyword blocking option.
6. Dialers and automatic installations blocker which come from the websites user visit.
7. Settings panel to limit your employees (manager) access to client control panel & other café cop options.

Client Configuration Panel

Congrats, Cafe Cop is on at your Cyber Cafe.

Café Cop Support

For live assistance with our support desk use any of the instant messengers, our id's are as follows:

Mailing Address	Support Telephone	Sales Number	IM Id's
Global Office N'Liven Technologies UG-2, Raunak Tower, Khajrana Road, Indore - 452018 M.P. INDIA	Global Support No. +91 731 2563558 IST 09:00 to 21:00 US Sales No. Chicago, IL 630 983 0196 24 Hrs Support Line +91 98932 60558	Global Sales No. + 91 731 5060558 IST 09:00 to 21:00 US Sales No. Chicago, IL 630 983 0196 24 Hrs Sales Line +91 98932 60558	MSN ID cafecop Yahoo cafecop ICQ 328745427 Aol Cafcop